

DLW LINOLEUM



Creative by Nature



Gerflor[®]
theflooringgroup



DLW, THE GENUINE LINOLEUM BRAND	4-5
KEY BENEFITS OF LINOLEUM	6-7
NATURAL COMPOSITION	8-9
CIRCULAR ECONOMY	10
CARBON FOOTPRINT	11
CRADLE TO CRADLE CERTIFICATION	12-13
NEOCARE™	
THE NEW EXCLUSIVE SURFACE PROTECTION ..	14-17
• Indoor air quality	15
• Natural Design with realistic matt effect	15
• Easy to clean	16
• Hygiene	16
• Durable	17
THE MOST COMPLETE OFFER	18
COMPACT LINOLEUM	20-38
• Product range	20
• Description text	36
• Technical data	38
ACOUSTIC LINOLEUM	39-43
• Product range	40
• Description text	42
• Technical data	43
TECHNIC LINOLEUM	44-47
• Product range	45
• Description text	46
• Technical data	47
MORE THAN A FLOOR	48-49
CLEANING INSTRUCTIONS	50-51
MIX & MATCH	52-53
THE PROOF IS IN THE CUSTOMER EXPERIENCE	54-55

DLW, THE GENUINE LINOLEUM BRAND



SERVING ARCHITECTURE SINCE 1882

- **1863:** Invention of Linoleum by Sir Frederic Walton.
- **1882:** Foundation of DLW, the first linoleum brand in Germany and its factory is based in Delmenhorst (Germany)



HISTORICISM
1913
Gabriel von Seidl
Cityhall, **Bremen**



BAUHAUS
1927
Mies van der Rohe
Gropius
Weissenhofsiedlung,
Stuttgart



PART OF
GERFLOR GROUP
SINCE 2018



**MODERN
MOVEMENT**

1957
Le Corbusier
Heilsberger apartments,
Berlin



**CONTEMPORARY -
MARS 1976 MOVEMENT**

1992
Jean Nouvel
Hôtel Les Thermes, **Dax**



**CONTEMPORARY -
EXPERIMENTAL
& MINIMALISM**

2008
Herzog & Demeuron
Olympic Stadium, **Beijing**

KEY BENEFITS OF LINOLEUM



Durability

- Inlaid product construction
> **Long lasting appearance**
- Hardwearing
> **Adapted to high pedestrian and mechanical traffic**
- Micro scratch resistance
> **No problem with tearings and scratches**



Health

- Third part certified antiviral and antibacterial activity
> **Hygienic solution**
- Very low emissions
TVOC < 10 microgram/m³ after 28 days
> **Best indoor air quality**
- Neocare™ surface treatment (dirt and stain barrier)
> **Easy to clean**



Comfort

- Resilient and soft surface
> **Child friendly**
- Up to 19dB sound insulation
> **Acoustic comfort**
- Suitable for underfloor heating
> **Thermal comfort**



Design

- Selection of designs and colors
> **Freedom of choice**
- Matt effect
> **Contemporary finish**
- Mix and match possibilities
> **Creativity and differentiation**

NATURAL COMPOSITION

✓ 98%

NATURAL
(bio based & mineral)



COLORED PIGMENTS

✓ 76%

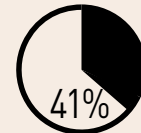
RAPIDLY
RENEWABLE



RESIN

Up to
✓ 40%

RECYCLED
CONTENT



LINSEED OIL



ECO LABELS

QUALITY



LIFE CYCLE ANALYSIS



INDOOR AIR QUALITY





20%
WOOD FLOUR



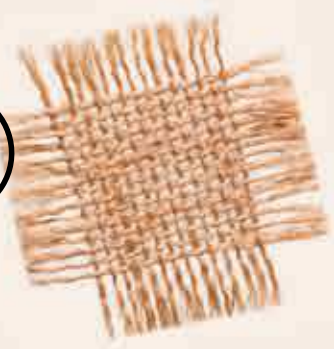
2%
CORK



8%
JUTE



19%
LIMESTONE



CIRCULAR ECONOMY

DLW Linoleum products are developed according to a Life cycle analysis (LCA) methodology:

- To assess the existing product impact on the environment through all stages of its life cycle.
- To develop new products specifically designed to reduce their environmental impact.



CARBON NEUTRAL*

Our CO₂ emissions are neutral during the first stages of the product life cycle, from the growing of raw materials to the end of the production process.

All the details can be found in our Environmental Product Declaration, which has been third part certified (EVEA laboratory) according to the guidelines of international certification body (UL).

[*] From Cradle to Gate: includes raw materials and manufacturing process (A1-A3 stages of EPD)

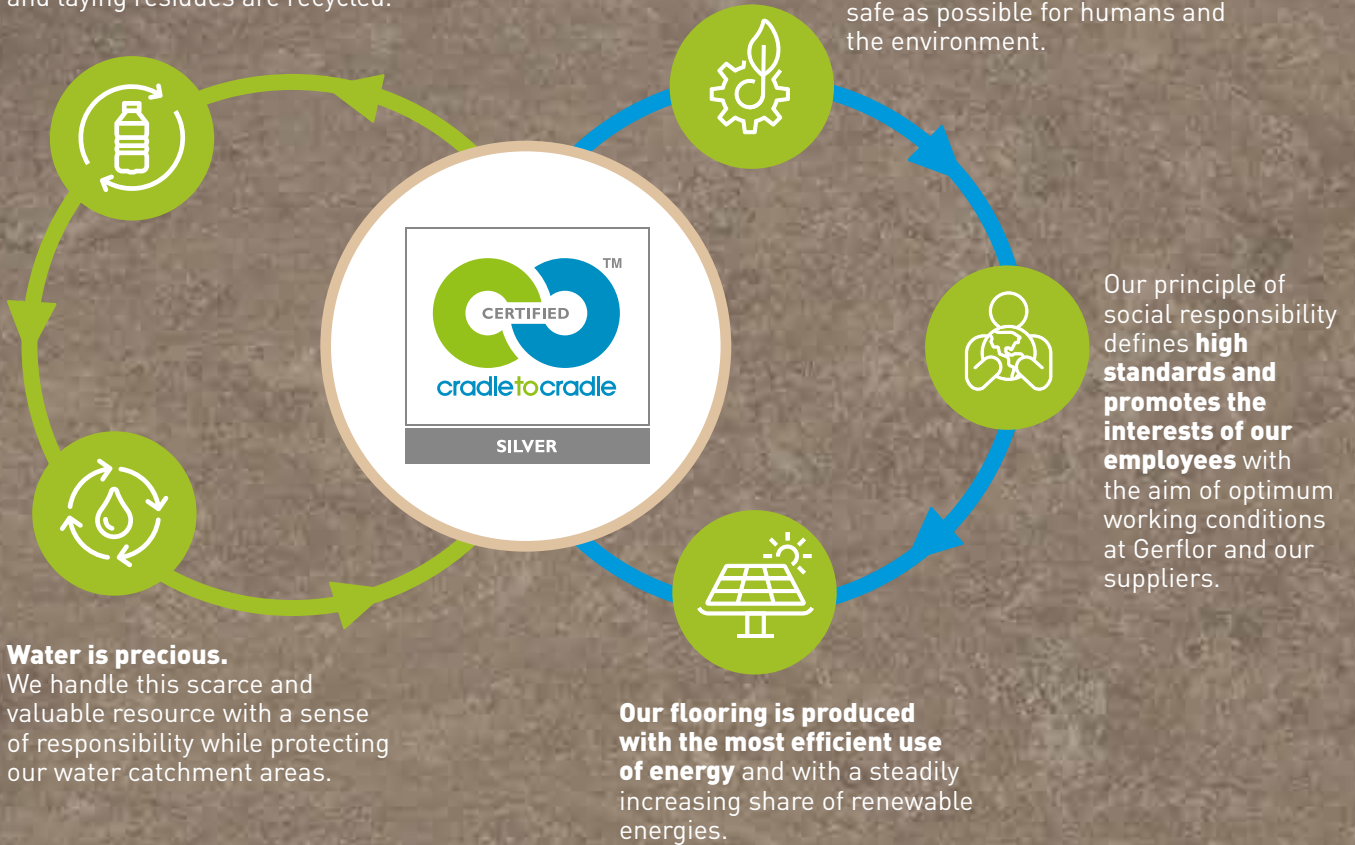




CRADLE TO CRADLE CERTIFIED™ SILVER⁽¹⁾

DLW Linoleum consists of **76%** rapidly renewable raw materials, and contains up to **40%** of recycled content. **100%** of production waste and laying residues are recycled.

The products are manufactured **using raw materials** that are as safe as possible for humans and the environment.



(1) MARMORETTE, ARABESQUE, COLORETTE, UNI WALTON, MARMORETTE ACOUSTIC, LINO ART

Being **Cradle to Cradle Certified™ Silver** means our product was awarded certification based upon their performance across five critical areas of sustainability: Material Health, Product Circularity, Renewable Energy and Carbon Management, Water Stewardship, and Social Fairness. The certification is awarded by the Cradle to Cradle Products Innovation Institute.

Cradle to Cradle Certified™ products are designed for a safe, circular and responsible future economy. Gerflor's final target is to reduce waste, up to get "zero waste" meaning the waste can become available for a new product cycle.

Cradle to Cradle Certified™ is a product certification based on a design philosophy Gerflor adheres to follow this approach in the search for continuous improvement.



EXCLUSIVE



PROTECTIVE BY NATURE

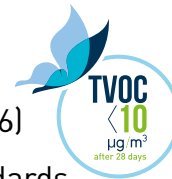
**NEW SOLVENT-FREE SURFACE PROTECTION
DEVELOPED EXCLUSIVELY FOR LINOLEUM.**

EXTREMELY HARD WEARING DUE TO TRIPLE
LASER UV CROSS-LINKING



INDOOR AIR QUALITY

- Very low VOC emissions
TVOC < 10microgram/m³ after 28 days (ISO 16516)
- Certified according to the most demanding standards



certified by
SCS Global Services



NATURAL DESIGN MATT EFFECT



LPX / PUR / others...

neocare



EASY TO CLEAN

- Dirt and stain barrier
- Cost effective maintenance
- Easy cleaning with a mop or any modern cleaning equipment

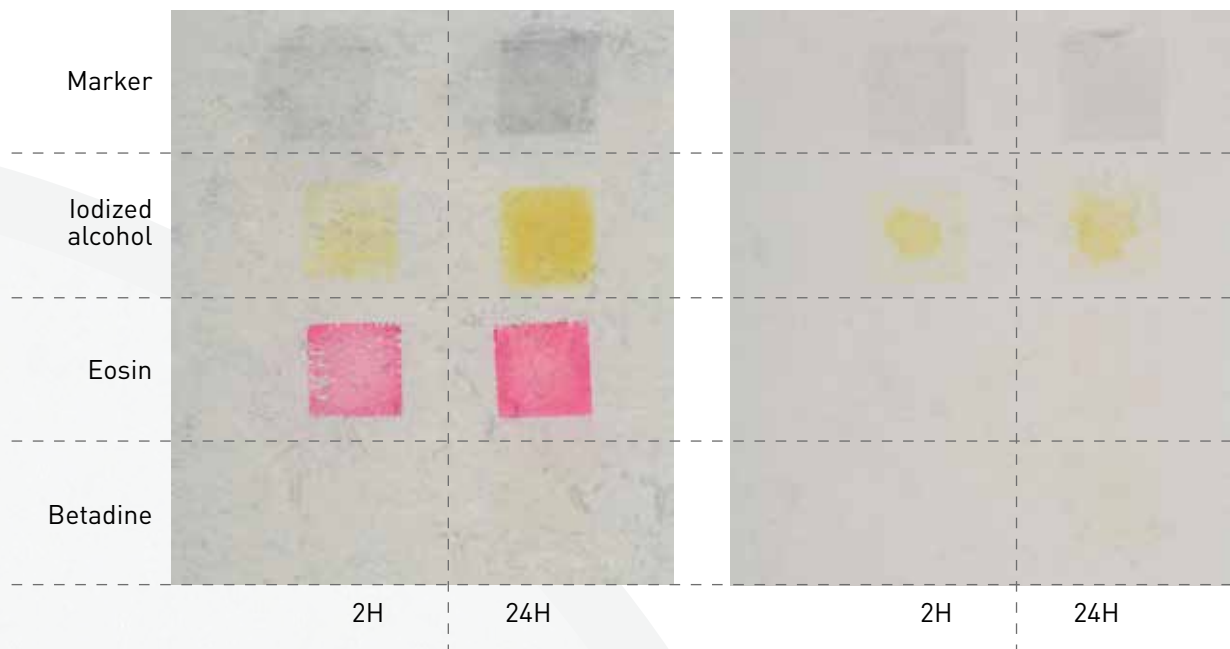
Detailed cleaning protocol available on www.gerfor.com



Standard Linoleum



NEOCARE™



HYGIENE

DLW Linoleum floorings contribute to lower the microbe load (bacteria, virus, ...) and to minimise the risk of a contamination chain.

- Excellent resistance against disinfection chemicals
- Antiviral and antibacterial activity

ANTIBACTERIAL SURFACES

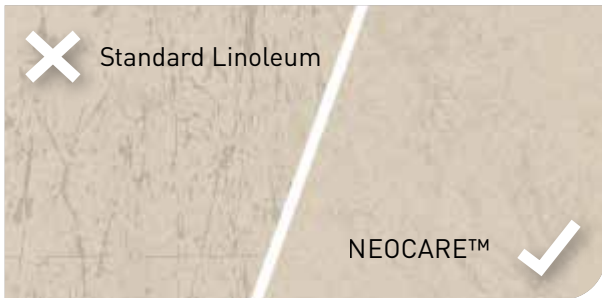
Tests conducted by a third part lab (Isega) according to ISO 22196 / JIS Z 2801 standard, prove that DLW Linoleum floorings with Neocare™ surface treatment have antibacterial activity against E.coli - S.aureus - MRSA: our surfaces **inhibit growth of bacteria by 99,99% after 24h**

ANTIVIRAL SURFACES

Tests conducted by a third part lab (Virhealth) according to ISO 21702 standard, prove that DLW Linoleum floorings with Neocare™ have antiviral activity against Human Coronaviruses : our surfaces **reduce the number of virus by 98.65% after 5h.**



DURABLE



- No sealing and waxing needed
- Higher scratch resistance
- Easy to repair: in case of heavily damaged flooring, DLW linoleum can be easily repaired using the spray buffing method (red disk)

WAXING

NEOCARE™ is a high performing surface treatment protecting against dirt, stains and scratches and does not require any sealing & waxing throughout the life of the product. Waxing remains an option.



Black disk



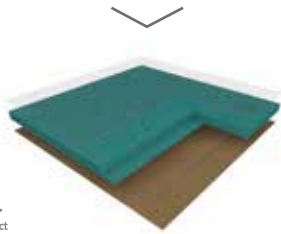
Uni Walton
0081 Nickel Grey

THE MOST COMPLETE OFFER

FLOORS

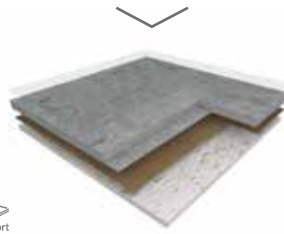
COMPACT LINOLEUM

2MM / 2.5MM / 3.2MM



ACOUSTIC LINOLEUM

4MM
Acoustic 15dB / AcousticPlus 19dB



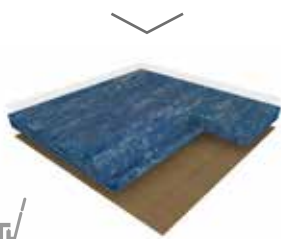
- ACOUSTIC VERSIONS
 - TILES
 - BFL-S1 VERSION

ON DEMAND

TECHNIC LINOLEUM

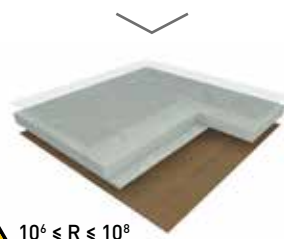
HIGH MECHANICAL TRAFFIC

4MM



DISSIPATIVE LINOLEUM FOR ESD AREA

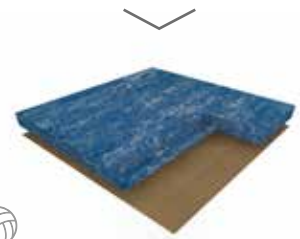
2.5MM



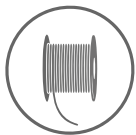
$10^6 \leq R \leq 10^8$

SPORT LINOLEUM

3.2MM / 4MM
More information in sport brochure



FINISHES



Welding rods

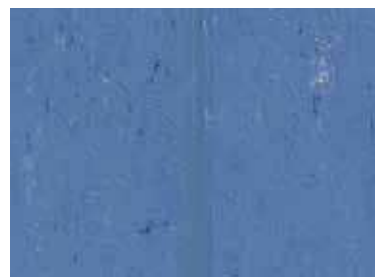
CAMOUFLAGE



Marmorette, Arabesque & Linodur

Camouflage welding rod: invisible joints.

UNI



Colorette, Uni Walton & Lino Art

Uni welding rod: a large palett of colors.

Welding rod matching table available on: gerflor.com



Handrails



Wall Coverings & Protections



Entrance mats



Skirtings & Profiles



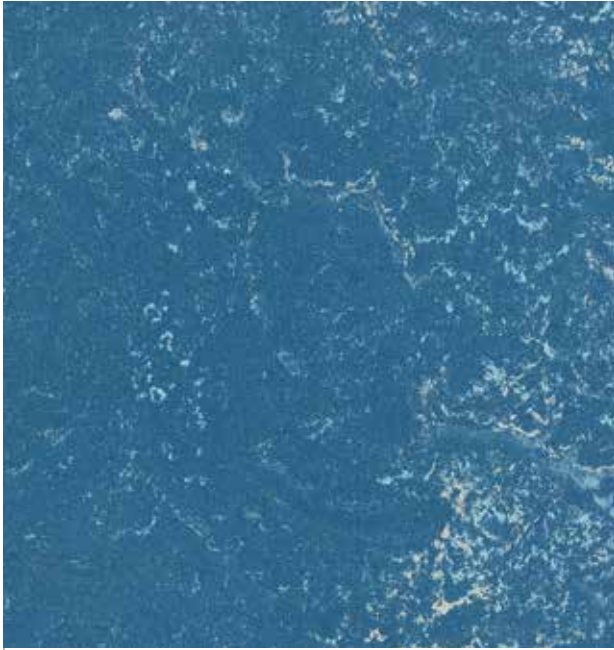
Arabesque
0305 Monarca

COMPACT LINOLEUM

ARABESQUE



2.5mm



0304 Seravezza
NCS: 5030-R90B / LRV: 13.6



0302 Antico
NCS: 2502-Y / LRV: 47.8



0305 Monarca
NCS: 4005-G50Y / LRV: 33.5



0301 Alcino
NCS: 8502-B / LRV: 5.7



0303 Verona
NCS: 2060-Y90R / LRV: 20.3



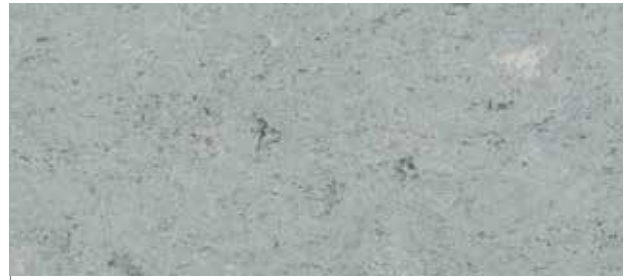
0306 Prato
NCS: 5020-B30G / LRV: 16.0



0155 Smoked Pearl
2.5mm
NCS: 2010-Y90R / LRV: 44.6



0056 Foggy Blue
2.0mm / 2.5mm / 3.2mm
NCS: 4005-Y50R / LRV: 31.8



0055 Ash Grey
2.0mm / 2.5mm / 3.2mm
NCS: 3502-B / LRV: 39.0



0153 Greystone Grey
2.5mm
NCS: 4005-Y50R / LRV: 29.5



0053 Ice Grey A A+
2.0mm / 2.5mm / 3.2mm
NCS: 4000-N / LRV: 31.2



0050 Quartz Grey
2.0mm / 2.5mm / 3.2mm
NCS: 5502-R / LRV: 20.7



0252
Light Grey



0054 Concrete Patty
2.5mm
NCS: 5500-N / LRV: 20.5



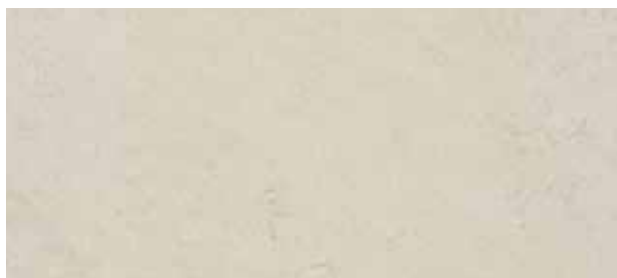
0059 Plumb Grey A A+
2.0mm / 2.5mm / 3.2mm
NCS: 7005-R50B / LRV: 11.3



0096 Midnight Grey A+
2.5mm
NCS: 8000-N / LRV: 7.3

A Acoustic 15dB in stock A+ AcousticPlus 19dB in stock

All other colours can be manufactured in Acoustic 15dB version. Special request - Minimum order quantity: 1200sqm. Below 1200sqm, use Korkment underlayer.
All other colours can be manufactured in AcousticPlus 19dB version. Special request - Minimum order quantity: 60sqm



0252 Light Grey
2.5mm
NCS: 2005-Y20R / LRV: 49.8



0045 Sand Beige A
2.0mm / 2.5mm
NCS: 2005-Y50R / LRV: 53.2



0254 Mineral Grey
2.5mm
NCS: 4005-Y20R / LRV: 34.3



0106 Hazelnut Shake
2.5mm
NCS: 4010-Y70R / LRV: 26.6



0146 Beeswax Beige
2.5mm
NCS: 3010-Y30R / LRV: 41.0



0166 Clay
2.5mm
NCS: 4005-Y20R / LRV: 28.4



0003 Dark Brown
2.5mm
NCS: 5010-Y50R / LRV: 23.0



0070
Rocky Brown



0164 Milk Coffee
2.5mm
NCS: 5010-Y50R / LRV: 18.9



0158 Tabac Grey
2.5mm
NCS: 6502-R / LRV: 14.8



0089 Pecan Pie
2.5mm
NCS: 6010-Y70R / LRV: 15.2



0160 Industrial Grey
2.0mm / 2.5mm
NCS: 7502-R / LRV: 10.3



0108 Mokka Brown
2.5mm
NCS: 8005-Y80R / LRV: 6.8

A Acoustic 15dB in stock

A+ AcousticPlus 19dB in stock



0091 Shiitake Mushroom
2.5mm
NCS: 2010-Y80R / LRV: 41.6



0090 Soapstone
2.5mm
NCS: 4010-Y70R / LRV: 28.2



0092 Beach
2.5mm
NCS: 3010-Y30R / LRV: 38.6



0042 Shortcrust
2.5mm
NCS: 3020-Y30R / LRV: 31.3



0145 Banana White
2.5mm
NCS: 1510-Y40R / LRV: 60.4



0251 Cream
2.5mm
NCS: 2010-Y10R / LRV: 52.9



0253 Pebble Grey
2.5mm
NCS: 3005-Y20R / LRV: 44.7




0243 Marble Beige
2.5mm
NCS: 2020-Y30R / LRV: 48.8




0070 Rocky Brown
2.0mm / 2.5mm / 3.2mm
NCS: 2020-Y40R / LRV: 40.2



0098 Desert Beige 
2.0mm / 2.5mm
NCS: 2020-Y40R / LRV: 49.9



0040 Light Sahara 
2.0mm / 2.5mm
NCS: 1515-Y30R / LRV: 52.7



0076 Pale Yellow
2.5mm
NCS: 2030-Y10R / LRV: 49.6



0173 Melon Orange
2.5mm
NCS: 2040-Y30R / LRV: 38.6



0073 Spicy Orange **A+**
2.5mm
NCS: 3040-Y50R / LRV: 24.7



0019 Sunset Orange **A**
2.5mm
NCS: 3040-Y60R / LRV: 27.3



0072 Golden Yellow
2.5mm
NCS: 2040-Y20R / LRV: 41.0



0172 Papaya Orange
2.5mm
NCS: 2060-Y30R / LRV: 33.1



0119 Terracotta
2.5mm
NCS: 3050-Y70R / LRV: 18.1

A Acoustic 15dB in stock **A+** AcousticPlus 19dB in stock

24 *All other colours can be manufactured in Acoustic 15dB version. Special request - Minimum order quantity: 1200sqm. Below 1200sqm, use Korkment underlayer.
All other colours can be manufactured in AcousticPlus 19dB version. Special request - Minimum order quantity: 60sqm*



0018
Lobster Red



0211 Pink
2.5mm
NCS: 1030-R / LRV: 42.1



0075 Light Aurora
2.5mm
NCS: 2030-Y60R / LRV: 40.2



0117 Mandarin Orange
2.5mm
NCS: 2070-Y70R / LRV: 18.8



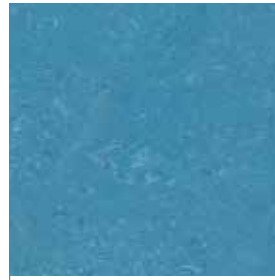
0118 Chili Red
2.5mm
NCS: 2070-Y90R / LRV: 12.5



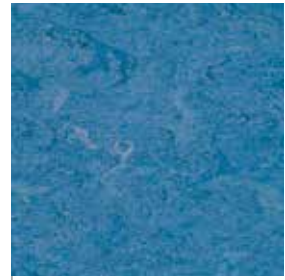
0018 Lobster Red
2.5mm
NCS: 4040-R / LRV: 10.6



0121 Blue Eyes
2.5mm
NCS: 3010-R80B / LRV: 39.0



0122 Fluffy Blue
2.5mm
NCS: 4030-B / LRV: 21.6



0026 Sky Blue
2.5mm
NCS: 4030-R90B / LRV: 19.7



0023 Dusty Blue A
2.0mm / 2.5mm / 3.2mm
NCS: 4010-R90B / LRV: 30.0



0049 Royal Blue
2.5mm / 3.2mm
NCS: 5020-R70B / LRV: 17.8



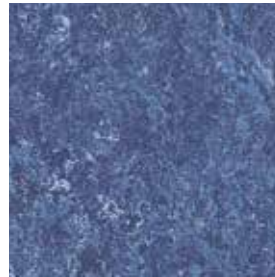
0022 Autumn Blue A+
2.5mm / 3.2mm
NCS: 5010-R90B / LRV: 20.6



0224 Mystery Blue
2.5mm
NCS: 6020-R90B / LRV: 13.0



0149 Dark Blue
2.5mm
NCS: 8010-R70B / LRV: 7.2



0148 Ink Blue
2.5mm
NCS: 6020-R70B / LRV: 10.8



0128 Violet
2.5mm
NCS: 4030-R60B / LRV: 13.8



0028 Dive
2.5mm
NCS: 6020-R80B / LRV: 9.4

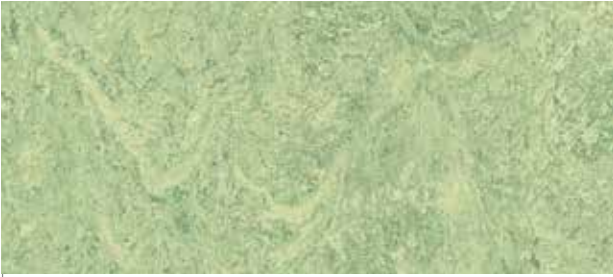


0136 Turquoise Bay
2.5mm
NCS: 6030-B10G / LRV: 9.0



0129 Curacao Petrol A+
2.5mm
NCS: 4040-B60G / LRV: 16.8





0130 Antique Green
2.5mm
NCS: 2020-G50Y / LRV: 45.5



0099 Grey Turquoise
2.5mm
NCS: 4010-B70G / LRV: 27.0



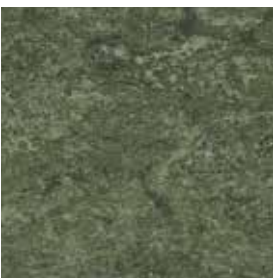
0043 Leaf Green
2.5mm
NCS: 4010-G30Y / LRV: 31.6



0100 Frog Green
2.5mm
NCS: 3030-G40Y / LRV: 31.4



0132 Lime Green
2.5mm
NCS: 2050-G60Y / LRV: 38.1



0083 Jungle
2.5mm
NCS: 6010-G50Y / LRV: 14.9



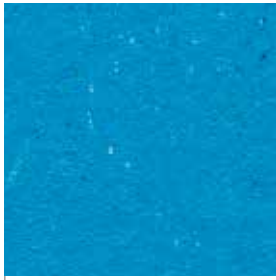
0138 Khaki
2.5mm
NCS: 5020-G90Y / LRV: 19.9



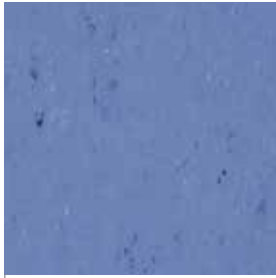
**0100
Frog Green**

Acoustic 15dB in stock AcousticPlus 19dB in stock

All other colours can be manufactured in Acoustic 15dB version. Special request - Minimum order quantity: 1200sqm. Below 1200sqm, use Korkment underlayer.
All other colours can be manufactured in AcousticPlus 19dB version. Special request - Minimum order quantity: 60sqm



0123 Poppy Blue
 NCS: 1560-R90B / LRV: 21.9



0004 Bluebird
 NCS: 4040-R80B / LRV: 18.6



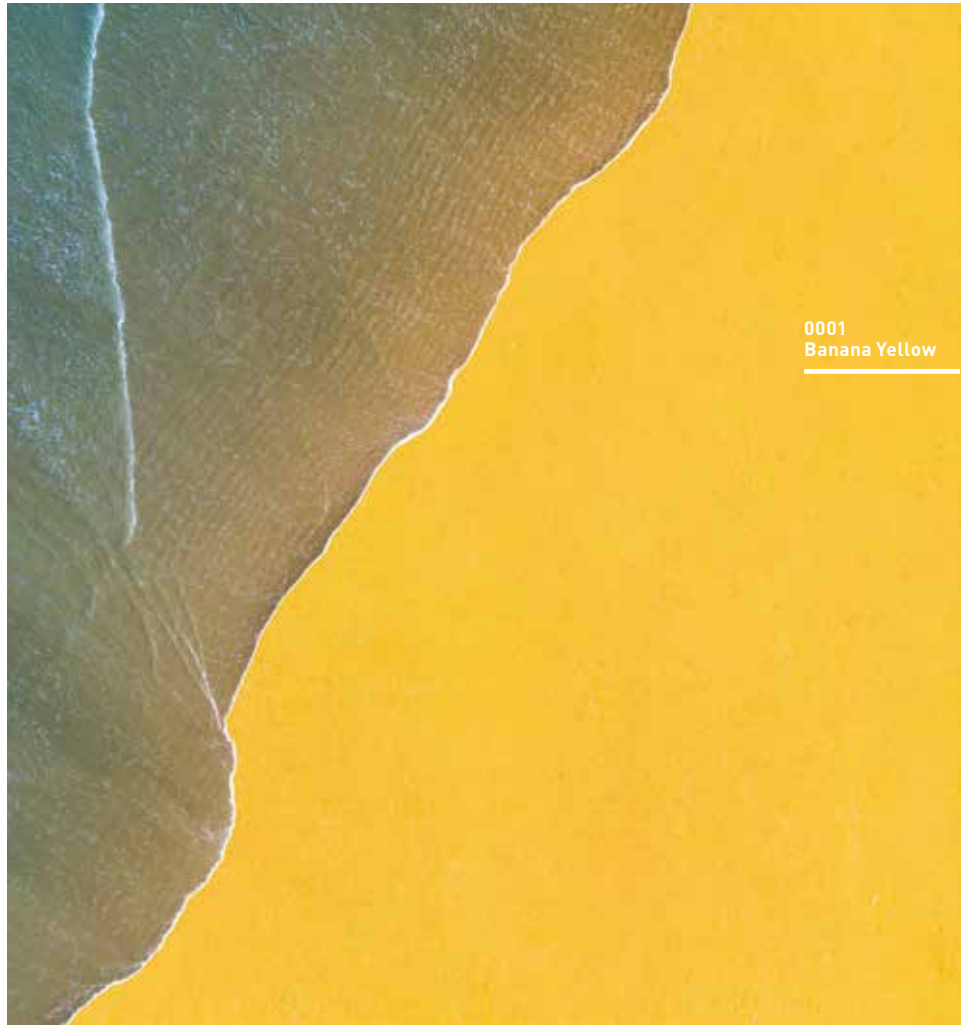
0132 Spicy Green
 NCS: 1060-G40Y / LRV: 44.1



0006 Vivid Green
 NCS: 3040-G20Y / LRV: 24.9



0080 Elephant Grey
 NCS: 6502-B / LRV: 13.5



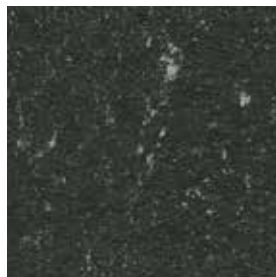
0001 Banana Yellow



0058 Aluminium Grey
 NCS: 3502-R / LRV: 36.6



0052 Oxyd Grey
 NCS: 2502-Y / LRV: 47.0



0081 Private Black
 NCS: 8502-B / LRV: 7.3



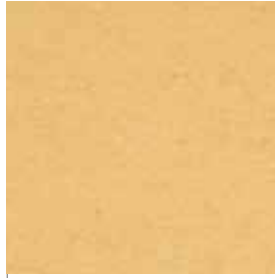
0059 Stone Grey
 NCS: 5500-N / LRV: 22.2

Acoustic 15dB in stock

AcousticPlus 19dB in stock



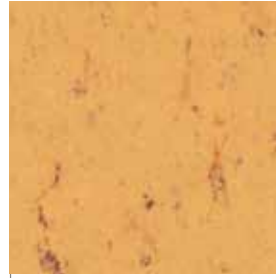
0001 Banana Yellow
NCS: 2050-Y / LRV: 45.7 A+



0071 Straw Beige
NCS: 2020-Y30R / LRV: 46.3



0171 Sunrise Orange
NCS: 1060-Y40R / LRV: 40.7



0073 Sand Yellow
NCS: 2040-Y30R / LRV: 44.8



0170 Kumquat Orange A+
NCS: 1070-Y70R / LRV: 26.9



0016 Deep Orange
NCS: 2050-Y60R / LRV: 27.7



0118 Power Red
NCS: 1070-Y90R / LRV: 18.9



0110 Cadillac Pink A+
NCS: 2050-R30B / LRV: 23.9



0012 Light Beige A+
NCS: 3010-Y30R / LRV: 40.2



0043 Light Mud
NCS: 5010-Y30R / LRV: 25.6





0062 Mediterranean Orange
NCS: 3060-Y70R / LRV: 16.4



0088 Chestnut
NCS: 5040-Y80R / LRV: 9.1



0043 Neutral Beige
NCS: 1515-Y30R / LRV: 51.1



0010 Pompeji Red
NCS: 2070-Y90R / LRV: 14.1



0060 Deep Brown
NCS: 7020-Y60R / LRV: 9.2



0100
Ocean Blue



0059 Frost Grey
NCS: 1502-Y50R / LRV: 59.6



0095 Spring Blue
NCS: 3030-B / LRV: 29.1



0081 Nickel Grey
NCS: 4502-R / LRV: 31.5



0100 Ocean Blue
NCS: 5040-R80B / LRV: 8.8



0085 Warm Concrete Grey
NCS: 4005-Y20R / LRV: 35.7



0090 Olive
NCS: 5020-Y / LRV: 22.3



0082 Broken Grey
NCS: 5502-R / LRV: 20.7



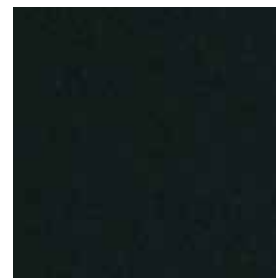
0058 Clay Grey
NCS: 6005-Y20R / LRV: 15.8



0035 Racing Green
NCS: 8005-B80G / LRV: 7.6



0083 Architects Grey
NCS: 7500-N / LRV: 10.9



0080 Black
NCS: 8505-R80B / LRV: 4.8

All colours can be manufactured in Acoustic 15dB version. Special request - Minimum order quantity: 1200 qm. Below 1200sqm, use Korkment underlayer.
All colours can be manufactured in AcousticPlus 19dB version. Special request - Minimum order quantity: 60sqm

LINO ART URBAN



2.5mm



0552 Silver Grey
NCS: 3005-G50Y / LRV: 41.8



0567 Shining Green
NCS: 4005-G80Y / LRV: 35.2



0566 Shining Blue
NCS: 5005-R80B / LRV: 21.8



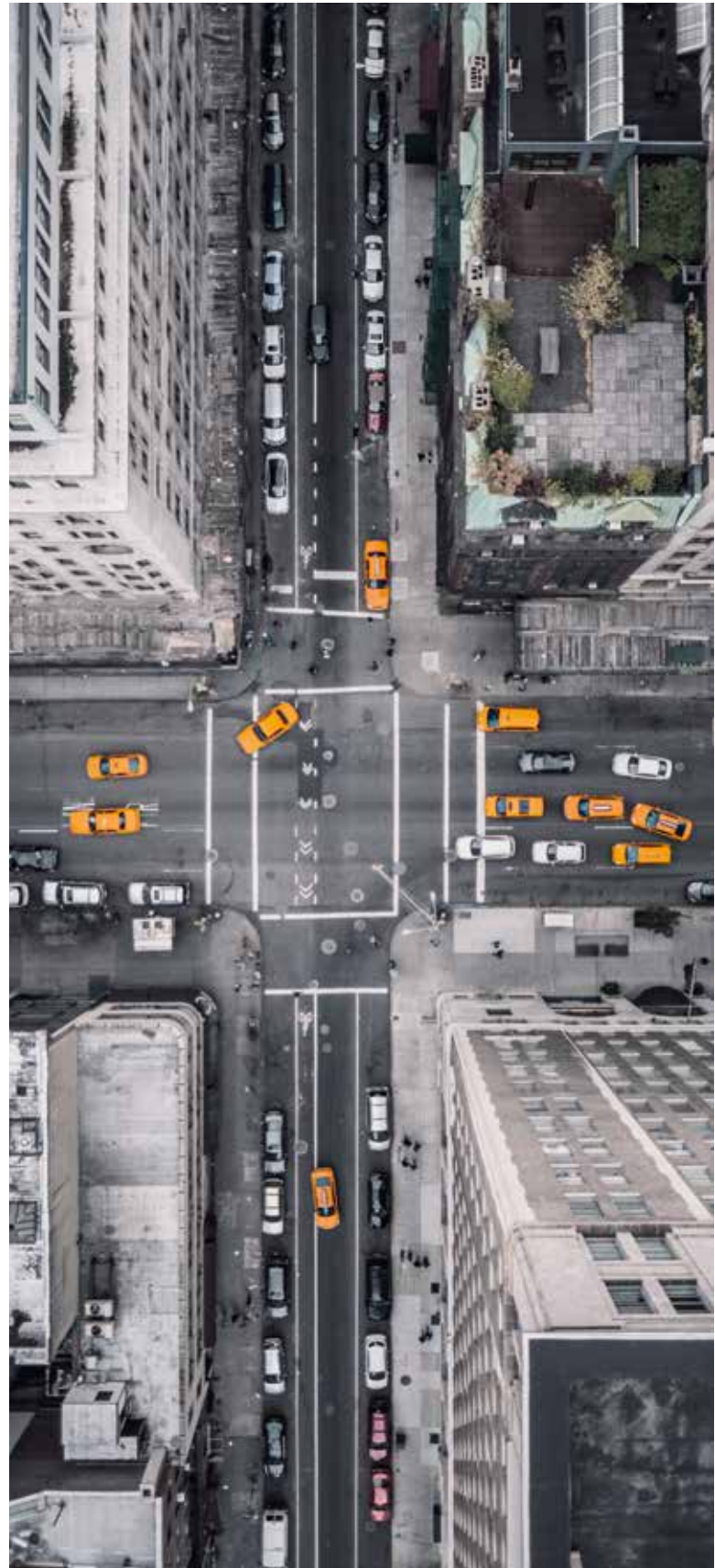
0565 Graphite Grey
NCS: 6005-R50B / LRV: 15.3



0562 Titan Grey
NCS: 3000-N / LRV: 41.2



0563 Zinc Grey
NCS: 4502-R / LRV: 27.4





0555 Flashy Street Grey
NCS: 4005-Y20R / LRV: 32.1



0550 Beton Soft Grey
NCS: 4005-Y50R / LRV: 31.7



0556 Mud Grey
NCS: 4010-Y30R / LRV: 33.7



0557 Urban Grey
NCS: 4010-Y50R / LRV: 30.5



0558 Screed Grey
NCS: LRV: 5010-Y10R / 22.8



0564 Natural Stone
NCS: 1505-Y20R / LRV: 59.1



0554 Concrete Grey
NCS: 5005-Y50R / LRV: 25.2



0551 Flashy Asphalt Grey
NCS: 5005-Y80R / LRV: 24.9



0559 Vintage Grey
NCS: 5005-Y20R / LRV: 24.9



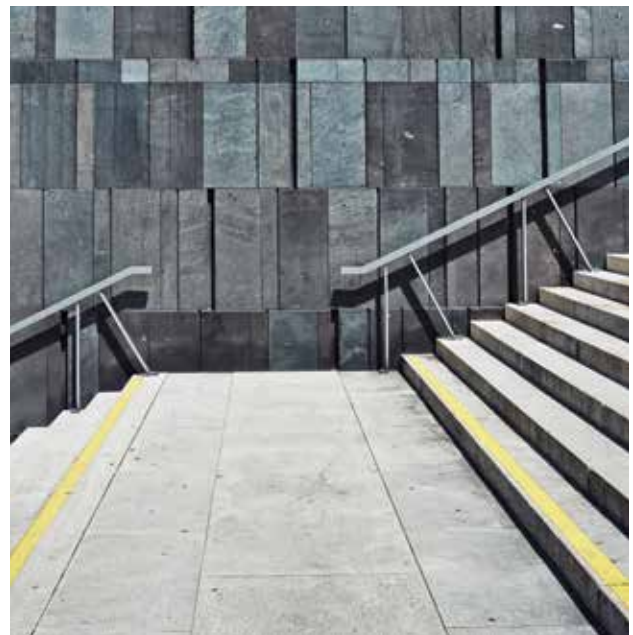
0560 Bold Grey
NCS: 6005-Y50R / LRV: 16.5



0553 Dark Concrete Grey
NCS: 6005-Y50R / LRV: 16.1



0561 Pitch Black
NCS: 8000-N / LRV: 7.1



All colours can be manufactured in Acoustic 15dB version. Special request - Minimum order quantity: 1200 qm. Below 1200sqm, use Korkment underlayer.
All colours can be manufactured in AcousticPlus 19dB version. Special request - Minimum order quantity: 60sqm

LINO ART FLOW



0024 Magma
NCS: 3010-Y60R / LRV: 47.8



0012 Waterfall
NCS: 2002-Y50R / LRV: 50.3



0005 Bamboo
NCS: 2005-Y20R / LRV: 50.6



0030 Rain
NCS: 2002-Y50R / LRV: 43.3



0048 Travertin
NCS: 2010-Y30R / LRV: 55.0



0036 Shaal Concrete
NCS: 2002-Y50R / LRV: 52.6



0050 Grey Line
NCS: 5000-N / LRV: 26.0



0083 Light Grey
NCS: 7500-N / LRV: 10.4



0043 Pulp Greige
NCS: 5005-Y20R / LRV: 25.4



0162 Bark
NCS: 6010-Y50R / LRV: 16.0

All colours can be manufactured in Acoustic 15dB version. Special request - Minimum order quantity: 1200 qm. Below 1200sqm, use Korkment underlayer.
All colours can be manufactured in AcousticPlus 19dB version. Special request - Minimum order quantity: 60sqm



Lino Art Flow
0083 Light Grey

LINO ART METALLIC



0078 Petrol Blue
NCS: 7010-R70B / LRV: 11.2



0076 Salsa
NCS: 4050-Y90R / LRV: 10.0



0070 Cool Grey
NCS: 7005-B20G / LRV: 11.1



0072 Olive Green
NCS: 7005-Y50R / LRV: 13.5



0068 Bottle Green
NCS: 8005-B80G / LRV: 7.2



0083 Alumino Light Grey
NCS: 7500-N / LRV: 11.0



0080 Firmament Black
NCS: 8500-N / LRV: 5.0



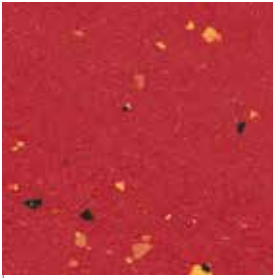
0074 Burned Siena
NCS: 8005-Y80R / LRV: 6.7



LINO ART STAR



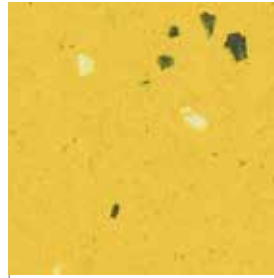
2.5mm



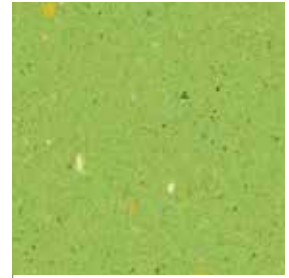
0015 Glaring Red
NCS: 2070-R / LRV: 11.5



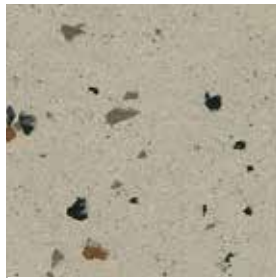
0075 Apricot
NCS: 2050-Y50R / LRV: 29.0



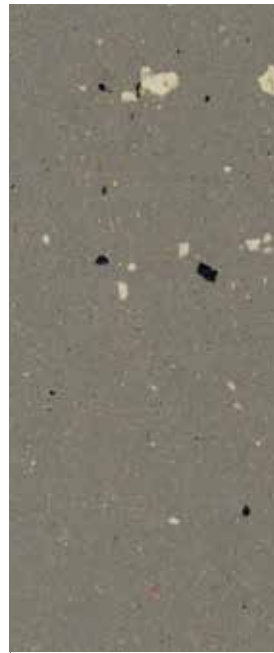
0001 Lemon Yellow
NCS: 1050-Y10R / LRV: 47.9



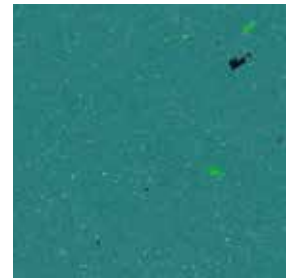
0030 Apple Green
NCS: 2050-G40Y / LRV: 35.0



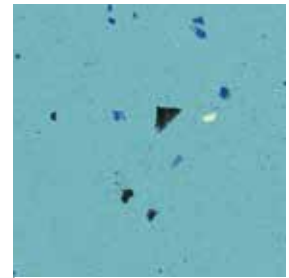
0092 Stratiatella
NCS: 4005-Y20R / LRV: 35.4



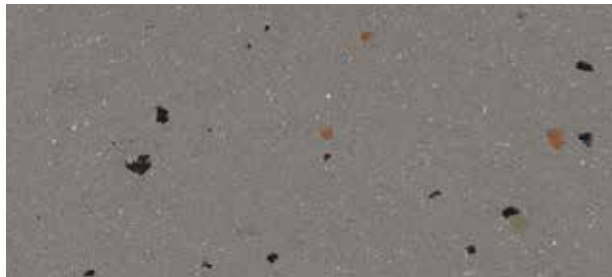
0059 Dusty Grey
NCS: 5005-Y50R / LRV: 20.9



0023 Blue Turquoise
NCS: 5030-B50G / LRV: 16.0



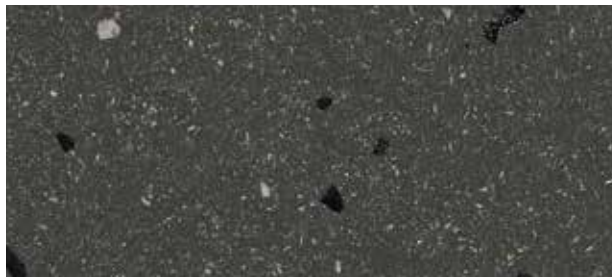
0020 Aqua Turquoise
NCS: 2040-B / LRV: 33.9



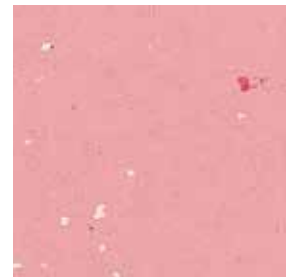
0090 Smooth Grey
NCS: 6005-Y80R / LRV: 17.5



0025 Clear Blue
NCS: 5030-R70B / LRV: 13.4

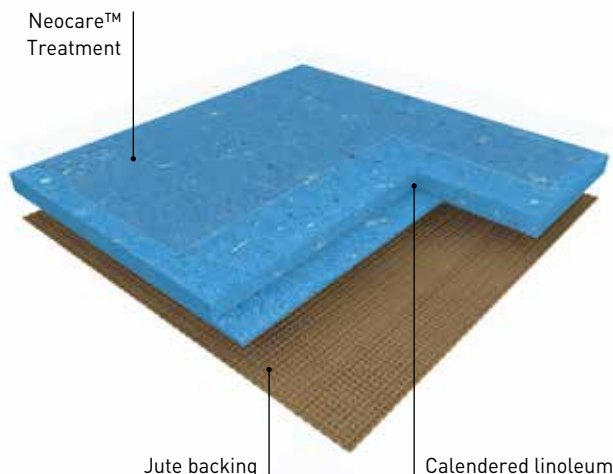


0085 Mid Grey
NCS: 8000-N / LRV: 8.2



0094 Bubble Gum
NCS: 1040-R / LRV: 42.5

COMPACT LINOLEUM neo care™



ARABESQUE is a calendered linoleum compact floorcovering in sheet, 2m wide, providing excellent resistance to everyday wear and tear in high traffic areas. Its weight is 2900g/sqm in 2.5mm. It features a marbled design and presents a matt finish, is composed of 98% natural materials (linseed oil, wood flour, resins, cork, minerals and jute fabric) among of which 76% are rapidly renewable.



LINO ART is a calendered linoleum compact floorcovering in sheet, 2m wide, providing excellent resistance to everyday wear and tear in high traffic areas. Its weight is 2900g/sqm in 2.5mm. It features a striated design (FLOW), a scattered metallic design (METALLIC), a scattered colour chips design (STAR), a concrete design (URBAN) and presents a matt finish, is composed of 98% natural materials (linseed oil, wood flour, resins, cork, minerals and jute fabric) among of which 76% are rapidly renewable.



COLORETTE is a calendered linoleum compact floorcovering in sheet, 2m wide, providing excellent resistance to everyday wear and tear in high traffic areas. Its weight is 2900g/sqm in 2.5mm. It features a speckled design and presents a matt finish, is composed of 98% natural materials (linseed oil, wood flour, resins, cork, minerals and jute fabric) among of which 76% are rapidly renewable.

ARABESQUE, COLORETTE, MARMORETTE, UNI WALTON, LINO ART

The floorings are produced with Neocare™ solvent-free surface treatment, an exclusive photo-cured acrylate based lacquer surface treatment obtained by triple laser UV cross linking. Neocare™ offers excellent scratch resistance as well as resistance to chemicals found in aggressive environments such as bleach, hydro alcoholic solutions, Betadine and Eosin as well as markers making maintenance easier and increasing the life of the flooring. This treatment avoids performing any polishing throughout the lifetime of the product. It can however be polished following usual recommendations and according to the customer's wishes.



MARMORETTE is a calendered linoleum compact floorcovering in sheet, 2m wide, providing excellent resistance to everyday wear and tear in high traffic areas. Its weight is 2400g/sqm in 2.0mm, 2900g/sqm in 2.5mm and 3800g/sqm in 3.2mm. It features a marbled design and presents a matt finish, is composed of 98% natural materials (linseed oil, wood flour, resins, cork, minerals and jute fabric) among of which 76% are rapidly renewable.

The products ensure perfect indoor air quality (TVOC at 28 days [EN 16516] < 10 microgram/m³) and are classified A+ (the best class) in the context of health labeling. It is Floorscore®, M1 and Blue Angel certified.

The floorings are 100% recyclable, are composed of minimum 25% recycled content and up to 40% recycled content, 100% controlled, are REACH compliant and rated CfI-s1 for fire resistance.

Designed and manufactured in a sustainable way in a plant awarded with ISO 9001 (quality), ISO 14001 (environment) and ISO 50001 (energy) certifications, the floorings are Cradle to Cradle certified™ Silver. They are Environmental Performance Declaration (EPD) certified by an external laboratory indicating carbon neutrality during the first stages of their life cycle ("from cradle to gate").

The Camouflage (Arabesque, Marmorette) or Uni (Colorette, Uni Walton, Lino Art) welding rod makes the connections between the strips invisible.

They are antistatic, antibacterial according to ISO 22196 / JIS Z 2801 and antiviral according to ISO 21702.








UNI WALTON is a calendered linoleum compact floorcovering in sheet, 2m wide, providing excellent resistance to everyday wear and tear in high traffic areas. Its weight is 2900g/sqm in 2.5mm. It features a uni design and presents a matt finish, is composed of 98% natural materials (linseed oil, wood flour, resins, cork, minerals and jute fabric) among of which 76% are rapidly renewable.



Colorette
0123 Poppy Blue


COMPACT LINOLEUM neocare™

TECHNICAL DATA

			MARMORETTE	ARABESQUE / COLORETTE / UNI WALTON	LINO ART URBAN / FLOW / METALLIC / STAR
DESCRIPTION					
Total thickness	EN ISO 24346	mm	2.0 / 2.5 / 3.2	2.5	2.5
Backing	-	-	Jute fabric	Jute fabric	Jute fabric
Thickness of cork/foam backing	EN ISO 24340	-	-	-	-
Weight	EN ISO 23997	g/sqm	2400 / 2900 / 3800	2900	2900
Width of sheet	EN ISO 24341	cm	200	200	200
Length of sheet	EN ISO 24341	m	20-31	20-31	20-31
CLASSIFICATION					
Norm/Product specification	-	-	EN ISO 24011	EN ISO 24011	EN ISO 24011
European classification	EN ISO 10874	class	23 / 34 / 43 23 / 32 / 41 in 2.0mm	23 / 34 / 43	23 / 34 / 43
Fire rating	EN 13501-1	class	C _{fl} -s1*	C _{fl} -s1*	C _{fl} -s1*
Slip resistance	ASR A1.5 / DIN 51130 - BGR 181	class	R9	R9	R9
Barefoot slipping	DIN 51097	-	-	-	-
Impact sound insulation	EN ISO 717-2	dB	3dB / 5dB / 6dB	5dB	5dB
PERFORMANCES					
Residual indentation	EN ISO 24343-1	mm	≤ 0.09 / ≤ 0.11	≤ 0.11	≤ 0.11
Colour fastness	EN ISO 105 - B02	Rating	6	6	6
Vertical resistance	EN 1081	Ohm	-	-	-
Point contact resistance	VDE 0100	kOhm	> 200	> 200	> 200
Static electrical propensity	EN 1815	kV	≈ 2.0	≈ 2.0	≈ 2.0
Castor chair test (Type W)	ISO 4918	-	OK	OK	OK
Flexibility	ISO 24344	mm	Ø 20 (2.5mm)	Ø 20	Ø 20
Thermal resistance	EN 12667	sqm,K/W	0.012 / 0.015 / 0.018	0.015	0.015
Thermal conductivity	EN ISO 10456	W/(m.K)	0.17	0.17	0.17
Surface treatment	-	-	Neocare™	Neocare™	Neocare™
Chemical products resistance	EN ISO 26987	-	OK	OK	OK
Anti-bacterial activity (E. coli - S. aureus - MRSA) after 24 h**	EN ISO 22196 / JIS Z 2801	-	> 99.99% inhibits growth	> 99.99% inhibits growth	> 99.99% inhibits growth
Anti-viral activity (Human coronavirus) after 5 h**	ISO 21702	-	> 98.65% virucidal activity	> 98.65% virucidal activity	> 98.65% virucidal activity
INDOOR AIR QUALITY					
TVOC after 28 days	EN 16516	microgram/m ³	< 10	< 10	< 10
CIRCULAR ECONOMY					
Certification	Cradle to Cradle	-	Silver	Silver	Silver
CE MARKING					
	EN 14041: 2004 AC: 2006	-			 

* Glued according to certificate. / DOP numbers available from your local branch.

** The implementation of an effective cleaning method is the best defence against infection.

 Depending on light exposure, the product colour can vary due to the natural oxidation process of linoleum. This process is reversible. We recommend that the samples be exposed to sunlight for several hours prior to making a final color choice.



Colorette
0012 Light Beige

Colorette
0001 Banana Yellow

ACOUSTIC LINOLEUM

MARMORETTE ACOUSTIC



0019 Sunset Orange
NCS: 3040-Y60R / LRV: 27.3



0098 Desert Beige
NCS: 2020-Y40R / LRV: 49.9



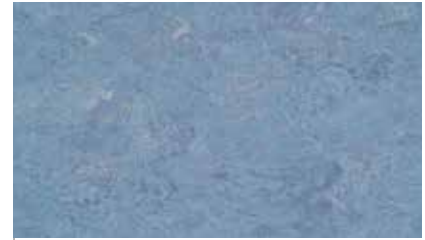
0045 Sand Beige
NCS: 2005-Y50R / LRV: 53.2



0059 Plumb Grey
NCS: 7005-R50B / LRV: 11.3



0053 Ice Grey
NCS: 4000-N / LRV: 31.2



0023 Dusty Blue
NCS: 4010-R90B / LRV: 30.0

MARMORETTE ACOUSTICPLUS



0129 Curacao Petrol
NCS: 4040-B60G / LRV: 16.8



0130 Antique Green
NCS: 2020-G50Y / LRV: 45.5



0022 Autumn Blue
NCS: 5010-R90B / LRV: 20.6



0073 Spicy Orange
NCS: 3040-Y50R / LRV: 24.7



0070 Rocky Brown
NCS: 2020-Y40R / LRV: 40.2



0040 Light Sahara
NCS: 1515-Y30R / LRV: 52.7



0096 Midnight Grey
NCS: 8000-N / LRV: 7.3



0059 Plumb Grey
NCS: 7005-R50B / LRV: 11.3



0053 Ice Grey
NCS: 4000-N / LRV: 31.2

All other colors can be manufactured in Acoustic 15dB version. Special request - Minimum order quantity: 1200sqm. Below 1200sqm, use Korkment underlayer.
All other colors can be manufactured in AcousticPlus 19dB version. Special request - Minimum order quantity: 60sqm

COLORETTE ACOUSTICPLUS



0001 Banana Yellow
NCS: 2050-Y / LRV: 45.7



0170 Kumquat Orange
NCS: 1070-Y70R / LRV: 26.9



0110 Cadillac Pink
NCS: 2050-R30B / LRV: 23.9



0132 Spicy Green
NCS: 1060-G40Y / LRV: 44.1



0123 Poppy Blue
NCS: 1560-R90B / LRV: 21.9



0004 Bluebird
NCS: 4040-R80B / LRV: 18.6



0012 Light Beige
NCS: 3010-Y30R / LRV: 40.2



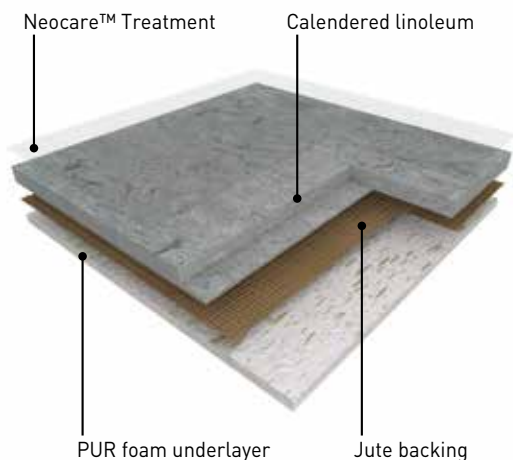
0059 Stone Grey
NCS: 5500-N / LRV: 22.2



0080 Elephant Grey
NCS: 6502-B / LRV: 13.5

0001
Banana Yellow

ACOUSTIC LINOLEUM neocare™



MARMORETTE ACOUSTICPLUS is a calendered linoleum acoustic floorcovering in sheet, 2m wide, providing excellent resistance to everyday wear and tear in high traffic areas.

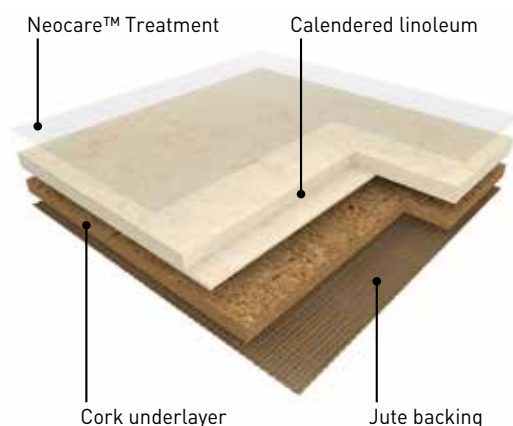
Its weight is 3500g/sqm in 4.0mm.

It features a marbled design and presents a matt finish, is composed of bio based materials (linseed oil, wood flour, resins, cork, minerals and jute fabric), rapidly renewable and features a 1.5mm recycled foam underlayer, ensuring up to 19dB impact sound reduction.

COLORETTE ACOUSTICPLUS is a calendered linoleum acoustic floorcovering in sheet, 2m wide, providing excellent resistance to everyday wear and tear in high traffic areas.

Its weight is 3500g/sqm in 4.0mm.

It features a speckled design and presents a matt finish, is composed of bio based materials (linseed oil, wood flour, resins, cork, minerals and jute fabric), rapidly renewable and features a 1,5mm recycled foam underlayer, ensuring up to 19dB impact sound reduction.



MARMORETTE ACOUSTIC is a calendered linoleum acoustic floorcovering in sheet, 2m wide, providing excellent resistance to everyday wear and tear in high traffic areas.

Its weight is 3900g/sqm in 4.0mm. It features a marbled design and presents a matt finish, is composed of bio based materials (linseed oil, wood flour, resins, cork, minerals and jute fabric), rapidly renewable and features a 2mm cork underlayer, ensuring up to 15dB impact sound reduction.

ACOUSTIC LINOLEUM

The floorings are produced with Neocare™ solvent-free surface treatment, an exclusive photo-cured acrylate based lacquer surface treatment obtained by triple laser UV cross linking. Neocare™ offers excellent scratch resistance as well as resistance to chemicals found in aggressive environments such as bleach, hydro alcoholic solutions, Betadine and Eosin as well as markers making maintenance easier and increasing the life of the flooring. This treatment avoids performing any polishing throughout the lifetime of the product. It can however be polished following usual recommendations and according to the customer's wishes.

The products ensure perfect indoor air quality (TVOC at 28 days (EN 16516) < 10 microgram/m³) and are classified A + (the best class) in the context of health labeling. They are Floorscore®, M1 and Blue Angel certified. The floorings are 100% recyclable, are composed of minimum 25% recycled content and up to 40% recycled content, 100% controlled, are REACH compliant and rated Cfl-s1 for fire resistance.

Designed and manufactured in a sustainable way in a plant awarded with ISO 9001 (quality), ISO 14001 (environment) and ISO 50001 (energy) certifications, the floorings are Cradle to Cradle certified™ Bronze (Marmorette AcousticPlus, Colorette AcousticPlus) and Cradle to Cradle certified™ Silver (Marmorette Acoustic). Their Environmental Performance Declaration (EPD) certified by an external laboratory, indicate carbon neutrality during the first stages of their life cycle ("from cradle to gate").

The Camouflage (Arabesque, Marmorette) or Uni (Colorette, Uni Walton, Lino Art) welding rod makes the connections between the strips invisible.

They are antistatic, antibacterial according to ISO 22196 / JIS Z 2801 and antiviral according to ISO 21702.



KORKMENT: CORK ACOUSTIC UNDERLAYER






2.0mm underlayer (weight 1.2kg/sqm),
15dB impact sound reduction

Ref R1020102

MARMORETTE
ACOUSTICPLUS 19dB

COLORETTE
ACOUSTICPLUS 19dB

MARMORETTE
ACOUSTIC 15dB

DESCRIPTION					
Total thickness	EN ISO 24346	mm	4.0	4.0	4.0
Backing	-	-	Foam backing	Foam backing	Cork and jute fabric
Thickness of cork / foam backing	EN ISO 24340	mm	1.5	1.5	2.0
Weight	EN ISO 23997	g/sqm	3500	3500	3900
Width of sheet	EN ISO 24341	cm	200	200	200
Length of sheet	EN ISO 24341	m	20-31	20-31	20-31
CLASSIFICATION					
Norm / Product specification	-	-	EN 686	EN 686	EN 687
European classification	EN ISO 10874	class	23 / 33 / 41	23 / 33 / 41	23 / 33 / 41
Fire rating	EN 13501-1	class	C _{fl} -s1 ⁽¹⁾	C _{fl} -s1 ⁽¹⁾	C _{fl} -s1 ⁽¹⁾
Slip resistance	ASR A1.5 / DIN 51130 - BGR 181	class	R9	R9	R9
Impact sound insulation	EN ISO 717-2	dB	19dB	19dB	15dB
PERFORMANCES					
Residual indentation	EN ISO 24343-1	mm	≤ 0.30	≤ 0.30	≤ 0.40
Colour fastness	EN ISO 105 - B02	degree	6	6	6
Point contact resistance	VDE 0100	kOhm	> 200	> 200	> 200
Static electrical propensity	EN 1815	kV	2.0	2.0	2.0
Castor chair test (Type W)	ISO 4918	-	OK	OK	OK
Thermal resistance	EN 12667	sqm,K/W	0.044	0.044	0.04
Thermal conductivity	EN ISO 10456	W/(m.K)	0.0937	0.0937	0.17
Surface treatment	-	-	Neocare™	Neocare™	Neocare™
Chemical products resistance	EN ISO 26987	class		OK	
Anti-bacterial activity (E. coli - S. aureus - MRSA) ⁽²⁾ after 24 hours	EN ISO 22196 / JIS Z 2801	-	> 99.99% inhibits growth	> 99.99% inhibits growth	> 99.99% inhibits growth
Anti-viral activity (Human coronavirus) after 5h ⁽²⁾	ISO 21702	-	> 98,65 % virucidal activity	> 98,65 % virucidal activity	> 98,65 % virucidal activity
INDOOR AIR QUALITY					
TVOC after 28 days	EN 16516	microgram/m ³	< 10	< 10	< 10
CIRCULAR ECONOMY					
Certification	Cradle to Cradle	-	Bronze	Bronze	Silver
CE MARKING					
	EN 14041: 2004 AC: 2006	-			 

[1] Glued according to certificate.

[2] The implementation of an effective cleaning method is the best defense against infection.

DOP numbers available from your local branch.



Depending on light exposure, the product colour can vary due to the natural oxidation process of linoleum. This process is reversible. We recommend that the samples be exposed to sunlight for several hours prior to making a final color choice.



TECHNIC LINOLEUM

Linodur
0020 Spring Blue

LINODUR



4.0 mm



HIGH MECHANICAL TRAFFIC RESISTANCE



0056 Marble Grey
NCS: 3502-Y / LRV: 36.0



0020 Spring Blue
NCS: 3020-B / LRV: 21.0



0081 Sparty Black
NCS: 8500-N / LRV: 6.0



0024 Speckled Blue
NCS: 4040-R80B / LRV: 14.0



0072 Peach Orange
NCS: 2060-Y40R / LRV: 30.0



0011 Avocado Green
NCS: 2050-G30Y / LRV: 29.0

MARMORETTE LCH

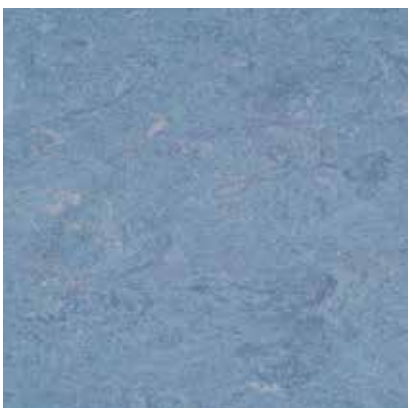


2.5 mm



$10^6 \leq R \leq 10^8$

DISSIPATIVE LINOLEUM FOR ESD AREAS



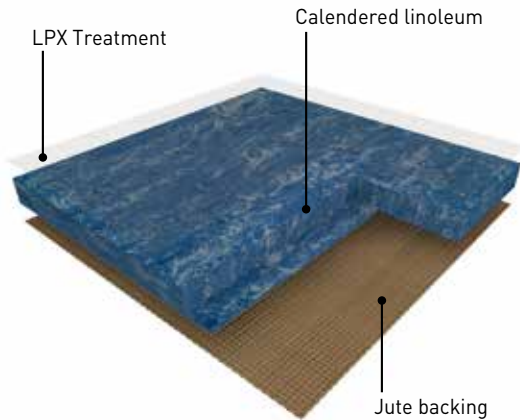
0023 Dusty Blue
NCS: 4010-R90B / LRV: 30.0



0055 Ash Grey
NCS: 3502-B / LRV: 39.0

LINODUR

HIGH MECHANICAL TRAFFIC RESISTANCE



LINODUR is a calendered linoleum compact floorcovering in sheet, 2m wide, providing excellent resistance to everyday wear and tear in high pedestrian and mechanical traffic areas and has been designed to resist a 30kg/sqm dynamic load.

Its weight is 4700g/sqm in 4.0mm.

It features a moiré design and is composed of 98% natural materials (linseed oil, wood flour, resins, cork, minerals and jute fabric) among of which 76% are rapidly renewable.

The flooring is equipped with LPX surface treatment, making the maintenance easy and the flooring long lasting.

The Camouflage welding rod makes the connections between the strips invisible.

It is antistatic, antibacterial according to ISO 22196 / JIS Z 2801.

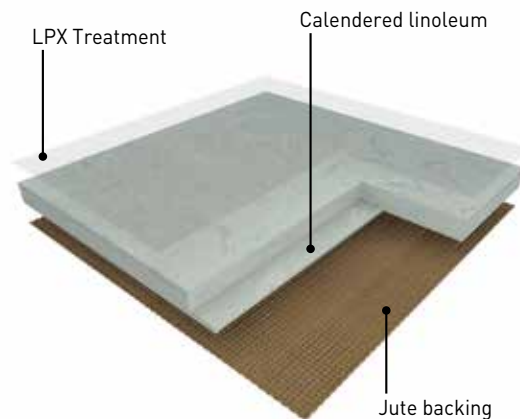
The flooring is 100% recyclable, is composed of minimum 25% recycled content and up to 40% recycled content, 100% controlled, is REACH compliant and rated CfI-s1 for fire resistance.

This product is manufactured in a plant awarded with ISO 9001 (quality), ISO 14 001 (environment) and ISO 50001 (energy) certifications.

The product also benefits from international certifications such as Floorscore® and Blue Angel (emissions).

MARMORETTE LCH

DISSIPATIVE LINOLEUM FOR ESD AREAS



MARMORETTE LCH is a calendered linoleum compact dissipative floorcovering in sheet, 2m wide, providing excellent resistance to everyday wear and tear in high traffic areas.

Its vertical resistance is $10^6 < R < 10^8 \Omega$.

Its weight is 3000g/sqm in 2.5mm.

It features a marbled design and presents a matt finish, is composed of 98% natural materials (linseed oil, wood flour, resins, cork, minerals and jute fabric) among of which 76% are rapidly renewable.

The flooring is equipped with LPX surface treatment, making the maintenance easy and the flooring long lasting.

The flooring is 100% recyclable, is composed of minimum 25% recycled content and up to 40% recycled content, 100% controlled, is REACH compliant and rated CfI-s1 for fire resistance.

It is designed and manufactured in a sustainable way in a plant awarded with ISO 9001 (quality), ISO 14001 (environment) and ISO 50001 (energy) certifications.

The Camouflage welding rod makes the connections between the strips invisible.

It is antistatic, antibacterial according to ISO 22196 / JIS Z 2801.

DESCRIPTION

Total thickness	EN ISO 24346	mm	4.0	2.5
Backing	-	-	Jute fabric	Jute fabric
Weight	EN ISO 23997	g/sqm	4700	3000
Width of sheet	EN ISO 24341	cm	200	200
Length of sheet	EN ISO 24341	m	20-31	20-31

CLASSIFICATION

Norm / Product specification	-	-	EN ISO 24011	EN ISO 24011
European classification	EN ISO 10874	class	23 / 34 / 43	23 / 34 / 43
Fire rating	EN 13501-1	class	C _{fl} -s1 ⁽¹⁾	C _{fl} -s1 ⁽¹⁾
Slip resistance	ASR A1.5 / DIN 51130 - BGR 181	class	R9	R9
Barefoot slipping	DIN 51097	class	A	-
Impact sound insulation	EN ISO 717-2	dB	6dB	3dB

PERFORMANCES

Residual indentation	EN ISO 24343-1	mm	≤ 0.20	≤ 0.11
Colour fastness	EN ISO 105 - B02	degree	6	6
Vertical resistance	EN 1081	Ohm	-	10 ⁴ ≤ R ≤ 10 ⁸
Point contact resistance	VDE 0100	kOhm	> 200	> 100
Static electrical propensity	EN 1815	kV	2.0	2.0
Castor chair test (Type W)	ISO 4918	-	OK	OK
Thermal resistance	EN 12667	sqm,K/W	0.023	0.015
Thermal conductivity	EN ISO 10456	W/(m.K)	0.17	0.17
Surface treatment	-	-	LPX	LPX
Chemical products resistance	EN ISO 26987	class		OK
Anti-bacterial activity (E. coli - S. aureus - MRSA) ⁽²⁾ after 24 hours	EN ISO 22196 / JIS Z 2801	-	> 99.99% inhibits growth	> 99.99% inhibits growth

CE MARKING

EN 14041: 2004
AC: 2006

-



(1) Glued according to certificate.

DOP numbers available from your local branch.



Depending on light exposure, the product colour can vary due to the natural oxidation process of linoleum. This process is reversible. We recommend that the samples be exposed to sunlight for several hours prior to making a final color choice.

MORE THAN A FLOOR... WALL & FINISHES

For more details visit gerflor.com



FLOOR PROTECTION



REF.: 058X0001

KORKMENT: CORK ACOUSTIC UNDERLAYER



REF.: R1020102

2mm



MATTING

SKIRTINGS MDF

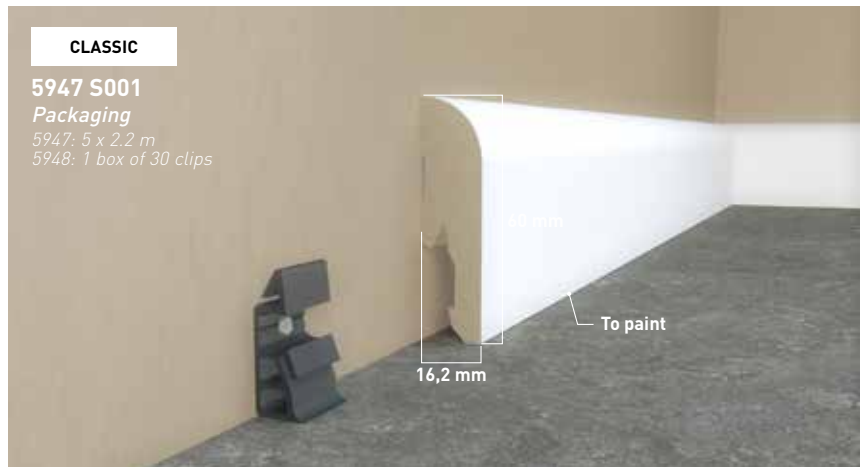
CLASSIC

5947 S001

Packaging

5947: 5 x 2.2 m

5948: 1 box of 30 clips



Color: White

SKIRTINGS COVE FORMER

HYGIENE / ULTRA CLEANLINESS

32 mm: 40126512

38 mm: 40146512

Packaging

30 x 2 lm strips



Color: 6512

SKIRTINGS HSLA

HYGIENE / ULTRA CLEANLINESS



Code

Compact 2.0mm	8009999
Compact 2.5mm	8019999
Compact 3.2mm	8029999
Conductive [LCH]	8049999


WELDING ROD




Welding rod matching table available on: gerflor.com

CLEANING NEOCARE™-TREATED LINOLEUM FLOORS

Marmorette / Arabesque / Colorette
Uni Walton / Lino Art















 **Damp sweeping equipment**
Flexible mop preferably fitted with disposable, antistatic and/or pre-impregnated gauze strips

 **Manual washing equipment**
Disposable microfibre mop or gauze

 **Single disk machine**

 **Autoscrubber**

 **Mechanical cleaning disk**
3M (or equivalent) colour disks

	Equipment used	Cleaning products	Cleaning methods
First use Manual or mechanical cleaning	    or  if soiled	Neutral detergent or Alkaline detergent	<ul style="list-style-type: none"> • Damp sweeping • Mechanical washing at 160-200 rpm (with water recovery)
Daily cleaning Manual cleaning	 	Neutral detergent / Disinfectant detergent ⁽¹⁾	<ul style="list-style-type: none"> • Damp sweeping • Manual washing with flat mop • Rinsing
OR			
Mechanical cleaning	  	Neutral detergent	<ul style="list-style-type: none"> • Damp sweeping • Mechanical washing at 160-200 rpm (with water recovery)
Deep cleaning Mechanical cleaning	   or 	Alkaline detergent	<ul style="list-style-type: none"> • Damp sweeping • Mechanical washing at 160-200 rpm (with water recovery)

(1) In areas where disinfection is essential (e.g. operating theatres, hospital rooms, etc.), alternate between using neutral detergent and amine-free disinfectant detergent.

These cleaning instructions have to be adapted depending on traffic and location of the area.

In the case of **manual maintenance** and to offer you the best results in terms of hygiene and appearance, **Gerflor recommends that you use neutral and alkaline detergents with high wetting power** (complete spreading and cleaning of the entire floor surface).



**Installation &
maintenance guidelines
available on**



Gerflor DLW flooring products are to be installed in full accordance with Gerflor DLW installation instructions and recognized trade standards.

An effective, regular cleaning and maintenance program is vital for retaining a high appearance level.

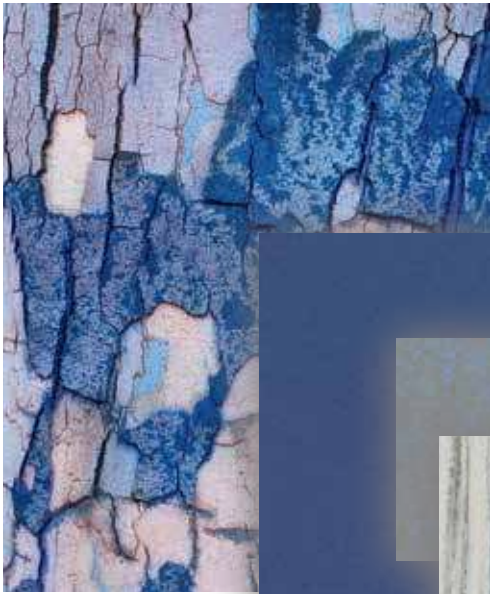
Gerflor DLW flooring products should only be used as floorcoverings.

Note: Gerflor DLW reserve the right to amend this specification without giving prior notice. For the latest versions of the technical specifications, check our website: www.gerflor.com



Uni Walton
0100 Ocean Blue

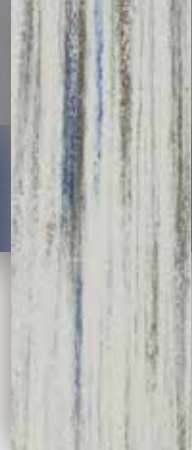
Lino Art Flow
0030 Rain



Lino Art Urban
0566 Shining Blue



Uni Walton
0100 Ocean Blue



Lino Art Flow
0030 Rain



Mix and match

Visualize your project

interiordesigner.gerflor.com



Lino Art Urban
0555 Flashy Street Grey

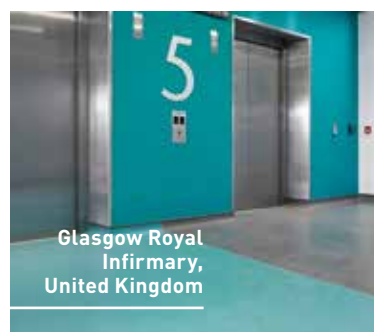


Lino Art Flow
0024 Magma



Marmorette
0117 Mandarin Orange

THE PROOF IS IN THE CUSTOMER EXPERIENCE





Language School
Underhub,
Kiev, Ukraine



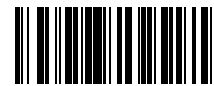
Educational Center
El Chaparral,
Granada, Spain

TESTIMONIAL:

"After trying DLW linoleum equipped with Neocare™, I would definitely recommend it for healthcare projects, as it meets our demanding standards in terms of cleaning and hygiene."

Anita Heidelberg, Head of Cleaning and Disinfection,
Glostrup Hospital, Denmark

A series of 20 horizontal dashed lines spanning the width of the page, intended for handwriting practice.



Z0045649

DLW Linoleum, Creative by Nature


At Gerflor, we believe that architecture has the power to improve people's lives.

Nature is our greatest source of inspiration. With the DLW Linoleum offer, we can provide architects with a collection of 159 colors, these are natural designs, that can enhance the sustainability and the creativity of their projects.

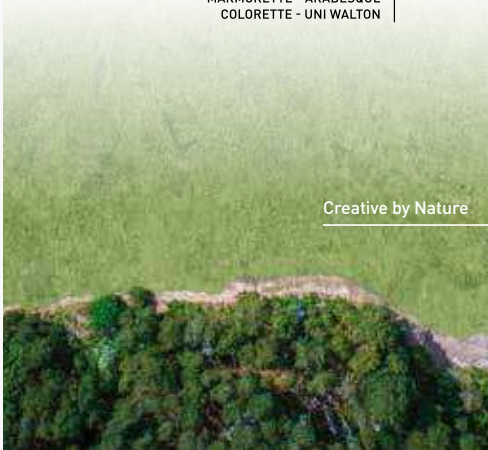
Made in Germany since 1882 and Cradle to Cradle certified™ Silver, the DLW Linoleum products are made of 98% natural materials including linseed oil, wood, limestone, jute and resin.

It's simply our way of connecting people closer to nature.

Mix and match COLLECTIONS


DLW LINOLEUM 

MARMORETTE - ARABESQUE
COLORETTE - UNI WALTON




Creative by Nature

Gerflor
theflooringgroup

DLW LINOLEUM 

LINO ART COLLECTION



Creative by Nature

Gerflor
theflooringgroup

Photo credits: Gerflor - Realisation: jpe - 072020 - Z0045649 - Indicative documentation cost: 2 €