



HANS BUCH

StandLux LED Area Work Light

With Output Socket
360° Beam Angle
220-240V AC Input

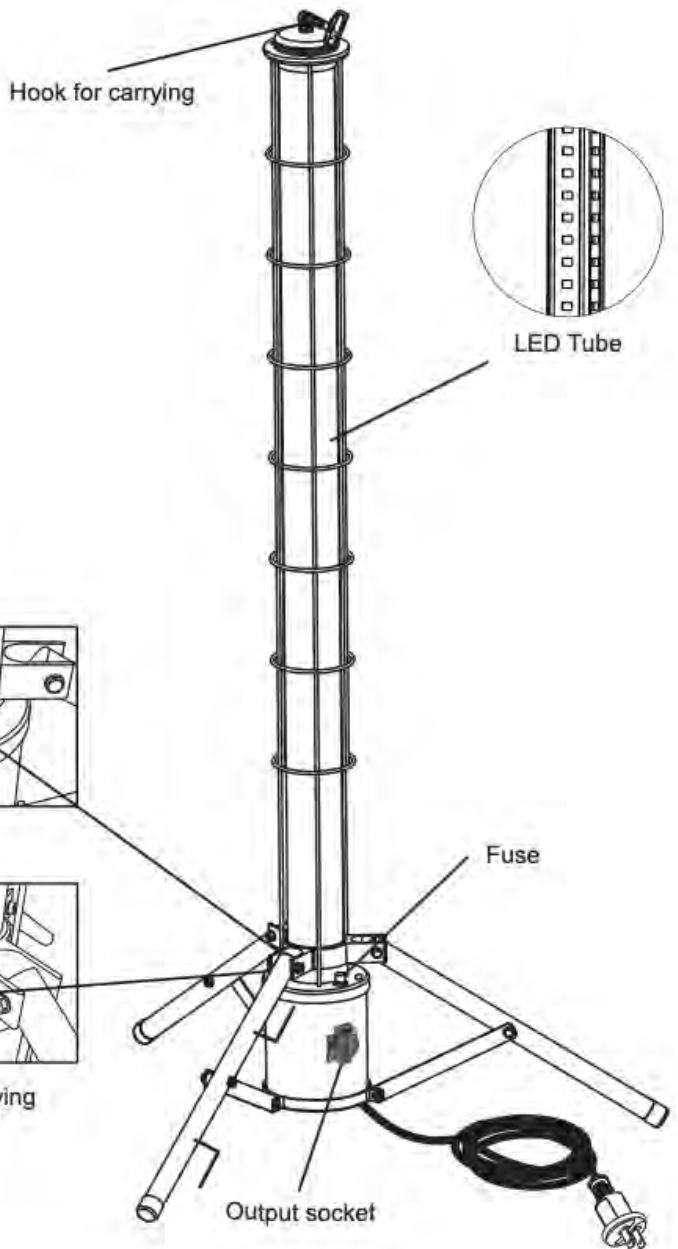
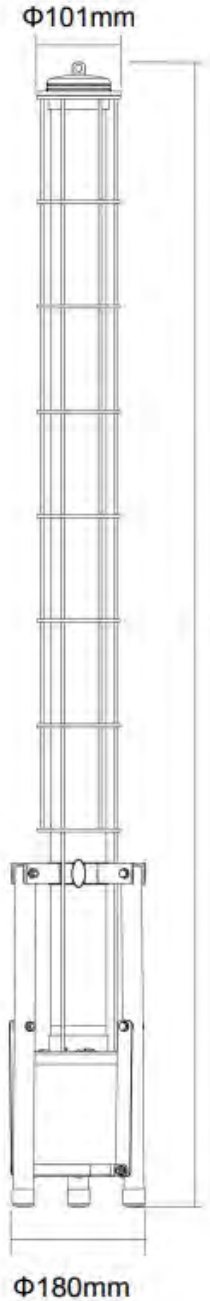


- 40W/60W/100W LED Area Work Light
- With robust, durable **Aluminum** casting
- With internal **AC output socket**, which allows the lamp to be used in continuous connection.
- This up-light comes with a pre-installed **collapsable tripod**, giving you a very portable light which is fast to set-up.
- Shining at 360 degree beam up **10000 lumens** you will feel like you are working in day time.
- The **milky PC diffuser** emits smooth and comfortable lighting. The LED lamp ensures that you get maximum light with very low energy consumption.
- **Carrying handle** attached to the light makes transportation of lights very easy.
- Single power take-off to enable **linking to further lights**.
- Ideal for plastering, event lighting and general construction.

Specification

Product Name	StandLux LED Area Work Light		
Model No.	SL 40	SL 60	SL 100
Power	40W	60W	100W
Lumen	4000lm	6000lm	10000lm
Material	Alu+Iron+PC		
Housing Color	Yellow/Black/customised		
Dimension	Ø186 x H1120mm	Ø186 x H1450mm	Ø186 x H1510mm
Input Voltage	100-277V AC 50/60Hz		
LED Chips	Epistar SMD2835		
CCT	3000K/4000K/5000K/6000K		
CRI	> 70		
Beam Angle	360°		
Light Range	Up to 35 meters		
PC Diffuser	Milky (optional – clear)		
Cable	3meters 3Gx1.5mm ² cable with Fitted plug		
Socket Output	16A 250V		
Outlet Socket	Max link 50pcs	Max link 35pcs	Max link 20pcs
Life Span	>30000 hours		
IP Grade	IP44. If no need Output Socket, it's IP65.		
IK Grade	IK08		
Supplied with	3meters 3Gx1.5mm ² cable with Fitted plug+Carrying Strap		
Optional Accessory	Carrying tool bag and Protection grid		
Warranty	3 years		
Packing	Carton box 120x21x21cm	Carton box 149x21x21cm	Carton box 161x21x21cm

Dimension and Drawing



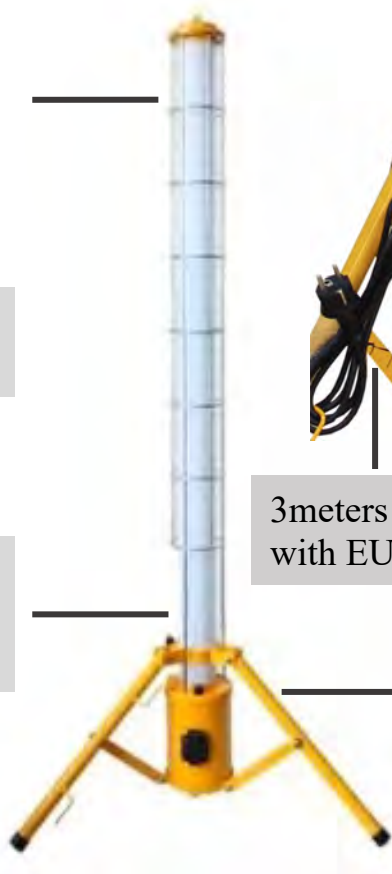
Details



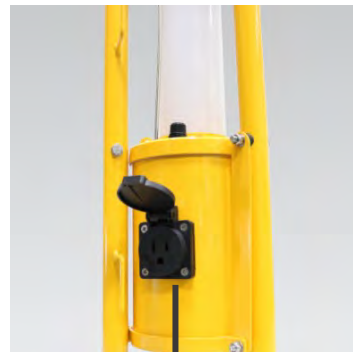
Attach carry strap to worklight using clips and eyelet as shown



Protection grid to protect your light



3meters 3Gx1.5mm2 cable with EU plug



Outlet Socket

The milky pc diffuser emits smooth and comfortable lighting

Durable Aluminum casting



Carrying Bag



Packing

Connecting

40W: Max connected 50pcs

60W: Max connected 35pcs

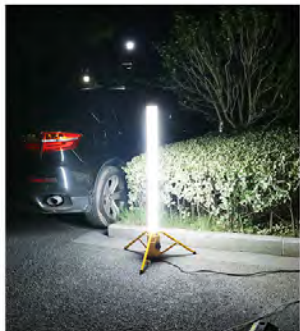
100W: Max connected 100pcs



CEE Plug and socket is also available



Application



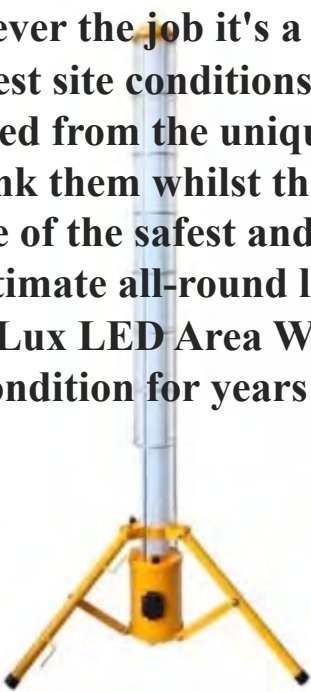


Whatever the **job** it's a robust lighting solution that can cope with the harshest site conditions.

Inspired from the unique Sitelighting design, lean them, hang them, lay them and link them whilst they deliver shadow free illumination.

As one of the safest and most versatile lighting the unique StandLux Lamp is the ultimate all-round lighting solution.

StandLux LED Area Work light is weather resistant allowing you to work in any condition for years to come.



Environment Requirement:

Working Temperature : -25°C~+50°C

Storage Temperature: -30°C~ 65 °C

Working Humidity : 30%-85%

Storage Humidity : 10%-90%