



Traffic Barrier - CHARLIE

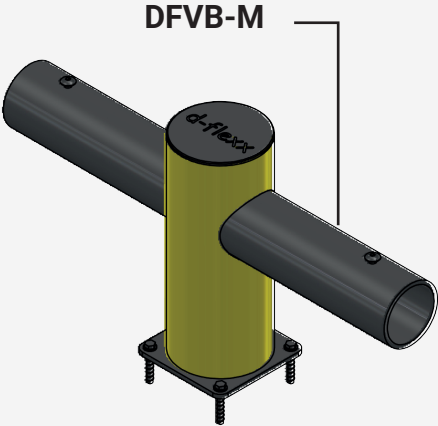
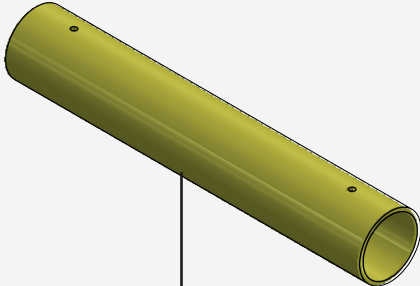
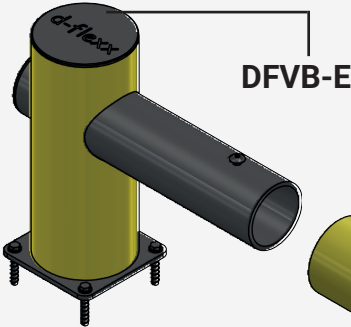


Table of contents

Art. No.	Description	Height	Weight	Page
DFVB-E	End post	500 mm	14,01 kg	3
DFVB-M	Middle post	500 mm	15,55 kg	3
Art. No.	Description	Length	Weight	Page
DFVB-R	Standard pipe Ø 160 mm	930 mm	3,802 kg	4
DFVB-I	Standard pipe Ø 160 mm	400 - 930 mm	2,88 kg / m	4

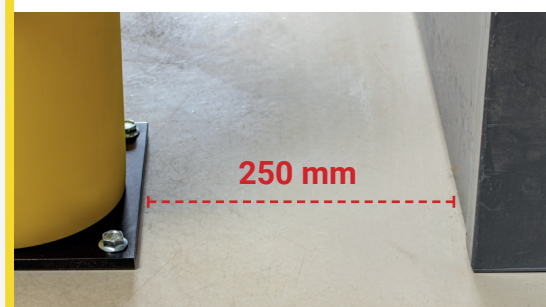
Technical Information

Material properties

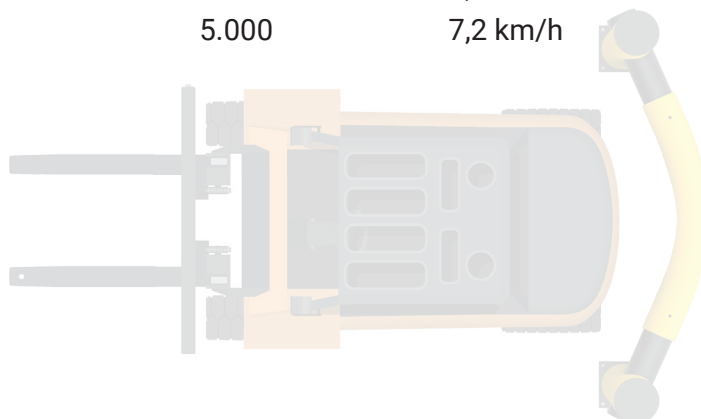
Operational temperature range	-40° up to + 50°
Ignition Temperature	350 - 360°C
Flash Point	350 - 360°C
Toxicity	Nontoxic
Chemical Resistance	high - ISO/TR 10358
Hygiene Seals	Non
Standard Warranty	5 years

Deflection Zone:

I 250 mm

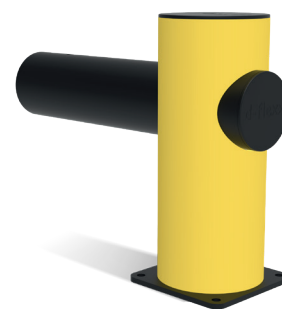
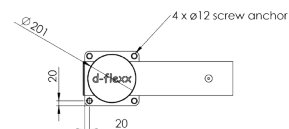
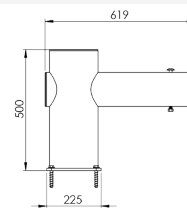


Impact Test	Tested to withstand force of (Joule)	Vehicle weight equivalent (kg)	Vehicle equivalent speed (km/h)	Equivalent angle of impact	Deflection zone
DFVB-E	4.000	5.000	7,2 km/h	90°	250 mm
DFVB-M	4.000	5.000	7,2 km/h	90°	250 mm
DFVB-R	9.000	5.000	7,2 km/h	90°	250 mm
DFVB-I	9.000	5.000	7,2 km/h	90°	250 mm



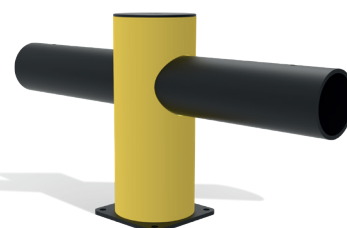
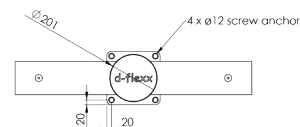
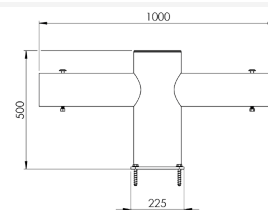
DFVB-E

Article description	End post
Item number	DFVB-E
EAN	4250912311206
Customs tariff number	39269097
Width (mm)	620
Height (mm)	500
Depth/Length (mm)	225
Installation width (mm)	400
Width without foot plate (mm):	619
Depth without foot plate (mm):	200
Deflection zone (mm)	250
Tested to withstand force (Joule):	4.000 J
Net weight	14,015 kg
Material	Polyethylene
Color	Yellow - black
Area of application	Indoor and outdoor use
Fixing	Fixing Material included. 4 x concrete screw M12x80



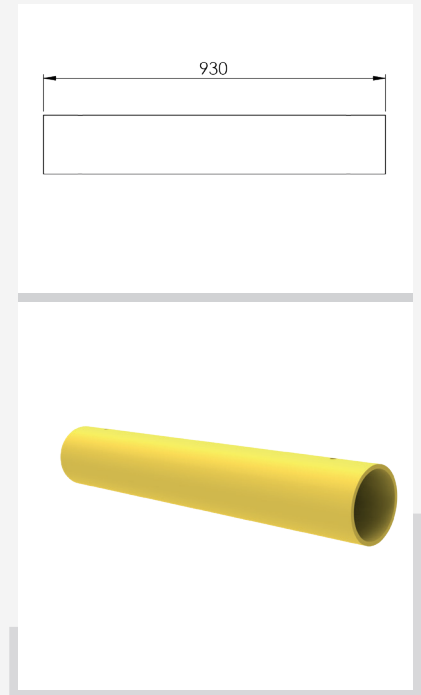
DFVB-M

Article description	Middle post
Item number	DFVB-M
EAN	4250912311213
Customs tariff number	39269097
Width (mm)	1.000
Height (mm)	500
Depth/Length (mm)	225
Installation width (mm)	600
Width without foot plate (mm):	1.000
Depth without foot plate (mm):	200
Deflection zone (mm)	250
Tested to withstand force (Joule):	4.000 J
Net weight	15,555 kg
Material	Polyethylene
Color	Yellow - black
Area of application	Indoor and outdoor use
Fixing	Fixing Material included. 4 x concrete screw M12x80



DFVB-R

Article description	Standard beam
Item number	DFVB-R
EAN	4250912311220
Customs tariff number	39269097
Width (mm)	930
Height (mm)	158
Depth/Length (mm)	N/A
Installation width (mm)	930
Width without foot plate (mm):	N/A
Depth without foot plate (mm):	N/A
Deflection zone (mm)	see post
Tested to withstand force (Joule):	9.000 J
Net weight	3,802 kg
Material	Polyethylene
Color	Yellow
Area of application	Indoor and outdoor use
Fixing	screwed together



DFVB-I

Article description	Standard beam individual
Item number	DFVB-I
EAN	4250912311237
Customs tariff number	39269097
Width (mm)	400 - 930
Height (mm)	158
Depth/Length (mm)	N/A
Installation width (mm)	400 - 930
Width without foot plate (mm):	N/A
Depth without foot plate (mm):	N/A
Deflection zone (mm)	see post
Tested to withstand force (Joule):	9.000 J
Net weight	2,88 kg / m
Material	Polyethylene
Color	Yellow
Area of application	Indoor and outdoor use
Fixing	screwed together

