

# Lamellar Heat-Exchanger Convactor Heaters



## Self-standing convactor heaters



### NATURAL CONVECTION HEATER

LZK - model CUBE  
TZK - model ROUND



### FAN OPERATED CONVECTOR HEATER

LZT - model CUBE  
TZT - model ROUND



## Wall-mounted convactor heaters



### NATURAL CONVECTION HEATER

LSK - model CUBE  
TSK - model ROUND



### FAN OPERATED CONVECTOR HEATER

LST - model CUBE  
TST - model ROUND



# Convactor heater modifications

In addition to the classification of designer ECOLITE heaters into round and square models, other convactor heater parameters can also be customised to meet your needs.

- Heater grille selection
- Stands and anchoring
- Colour variations of heaters or individual components
- Customer-specified front side print design
- Connection type (e.g. set in the wall)
- Convactor heater with an integrated voltage supply

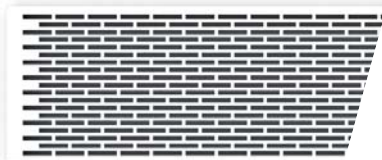


Structural heater modifications with adapted suction positioning are also available.

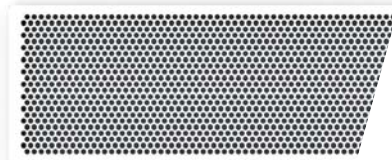
- Bottom suction - top exhaust (standard)
- Bottom suction - forward exhaust (standard)
- Forward suction - top exhaust
- Forward suction and exhaust

## Grilles

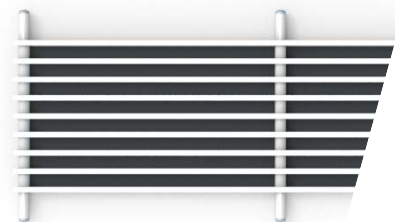
The grille design is specified upon ordering. The grille is a fixed and integral part of the convactor heater; it may not be removed to tamper with inner components of the heater. Each grille is carefully selected to match the interior as well as to achieve its purpose in different environments.



RECTANGULAR HOLES - TYPE R

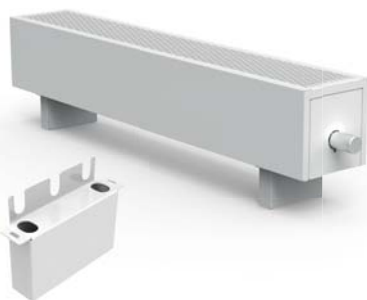


ROUND HOLES - TYPE C

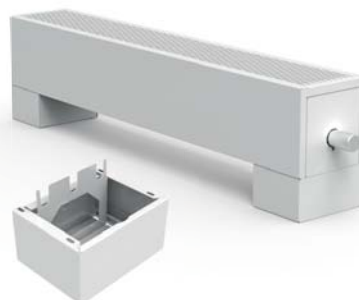


LINEAR GRILLE - TYPE L

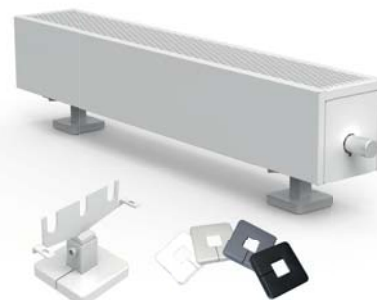
## Convectors stands – installation on ground



BLOCK STANDS - TYPE K



COVER STANDS - TYPE S



SUBFLOOR STANDS- TYPE H

## Colour variability

